



HOSA HANDBOOK: SECTION A

HOSA – THE ORGANIZATION

Copyright © 1985; 2025 Edition
by **HOSA, Inc.**

All rights reserved under International and Pan-American Copyrights Conventions. No portion of this publication may be reproduced in any form without permission in writing from HOSA, Inc. except by a local or state affiliation with HOSA.

Published by HOSA.
548 Silicon Drive, Suite 101
Southlake, TX 76092
972.874.0062
972.874.0063 - Fax

Printed in the United States of America

Copies of this publication are available by contacting the HOSA Headquarters at the above address or on the HOSA website at www.hosa.org.

Activities and procedures within HOSA-Future Health Professionals are governed by the philosophy of simple fairness to all. Therefore, the policy of HOSA-Future Health Professionals is that all operations will be performed without regard to race, religion, sex, national origin, and other characteristics illegal as well as reasonable accommodations with disabilities and accessibility requirements on public accommodations. HOSA is in compliance with the Americans with Disabilities Act of 1990.

TABLE OF CONTENTS

Foreword.....	3
Acknowledgments.....	5

PART ONE: GENERAL INFORMATION

What Is HOSA-Future Health Professionals?.....	6
How Does HOSA Work.....	6
Purpose, Mission, and Goals of HOSA.....	7
HOSA's Role in Building a Pipeline for Future Healthcare Professionals.....	8
The HOSA Organization.....	9
Levels of HOSA.....	10
Why Affiliate with HOSA.....	11
Official HOSA Emblem, Colors and Tagline.....	12
Core Values.....	12
HOSA Creed.....	12
Official HOSA Uniform Policy.....	13
Membership Categories.....	15
HOSA Members, Chapters, and Chartered Associations.....	17
Active Chartered Association Affiliation Guidelines.....	18
Inactive State Affiliation Guidelines.....	19
List of HOSA Chartered Associations and Charter Dates.....	20
Geographical HOSA Areas.....	21
HOSA, Inc. and the Board of Directors.....	22
HOSA Elected HOSA Executive Council.....	24
Duties of HOSA Executive Council.....	24
Executive Council Candidate Information.....	25
HOSA Headquarters.....	27
HOSA Foundation.....	28
HOSA Congressional Advisory Board.....	28
Council of HOSA Health Leaders.....	29
HOSA-100 National Advisory Council.....	29
HOSA Awards and Recognition.....	32
Honorary Life Members.....	33
HOSA International Leadership Conference.....	33
HOSA Publications.....	34
HOSA Emblematic Supplies.....	34

PART TWO: HISTORY

Early History.....	35
HOSA Was Born.....	37
The First Three Years.....	38
HOSA Moves Forward in the 80's.....	38
HOSA Management Headquarters.....	39
HOSA Motto/Emblem/Creed/Uniform Policy.....	40
Recognition by the U.S. Department of Education.....	40
HOSA Board of Directors and Competitive Events.....	41
Health Science or Biomedical Science Education Programs: Moving Forward.....	42
Chairmen, HOSA Inc. Board of Directors.....	44
HOSA Presidents.....	45
National and International Leadership Conferences.....	46
Policy of the United States Department of Education.....	47
HOSA Affiliated Groups.....	48

FOREWORD

The focus of **SECTION A** of the **HOSA HANDBOOK** is on **HOSA-Future Health Professionals - THE ORGANIZATION**. Additional Handbook Sections, as noted below, deal with other important facets of the HOSA program.

The entire **HOSA HANDBOOK** is not only a vital reference for HOSA chapters, members, and advisors but also represents the major reason this organization has experienced outstanding growth since its inception in 1976 -- a belief in HOSA's contribution to students in Health Science or Biomedical Science Education throughout the nation and a belief that people working together can accomplish a great goal.

The complete **HANDBOOK** will provide the HOSA advisor and members with the information needed to organize and/or maintain an effective **HOSA CHAPTER**. It also will help advisors integrate the HOSA program of work into the instructional program of Health Science or Biomedical Science Education. Activities of HOSA are an integral part of the instructional program that provides occupational skills in the health care field as well as builds leadership skills.

This **HANDBOOK** should be utilized in developing leadership skills among members and the HOSA Officer Team, and in planning, organizing, and conducting HOSA Chapter activities throughout the year. With the comprehensive **HOSA HANDBOOK** as a reference, it is believed that the entire HOSA organization will become an ever more effective organization in serving its members.

The complete **HOSA HANDBOOK** currently comprises three major sections, each published as a separate document and are FREE at www.hosa.org. This publication plan is designed to facilitate ease of use of the separate sections by chartered associations and local HOSA chapters for purposes and in combination for total perspective. In addition, separate section publication expedites addition of sections and individual section revision as the need arises.

Sections include the following:

HOSA HANDBOOK - SECTION A: HOSA-Future Health Professionals - THE ORGANIZATION

(First edition - 1982; Current Edition – 2025)

An essential part of every HOSA chapter's resource library, Section A provides basic information about HOSA as an organization serving Health Science or Biomedical Science Education students. Included are a description of HOSA-Future Health Professionals, its purposes, organization, structure, executive council composition, governance and operation, state affiliation, emblematic and ceremonial aspects, selected HOSA policies, historical development, and Bylaws.

HOSA HANDBOOK - SECTION B: THE HOSA COMPETITIVE EVENTS PROGRAM

(First edition - 1982; Current Edition – 2025)

A necessary instructional resource for HOSA CHAPTER members and the local HSE teacher - HOSA Advisor, Section B provides all current information pertaining to the HOSA Competitive Events Program to enhance leadership and technical skill development in the classroom and to guide competition at the local, district/regional/area, state, and international levels. This publication includes general rules and regulations as well as specific competitive event guidelines and competency-based performance rating sheets and selected policies and procedures pertaining to administering, preparing, and participating in HOSA Competitive Events.

HOSA HANDBOOK - SECTION C: GUIDES TO ORGANIZING AND MANAGING A HOSA CHAPTER (First edition - 1985; Current Edition - 2025)

A major leadership and instructional resource for HOSA chapter officers and members and the HSE teacher - HOSA advisor, Section C provides practical guidelines for organizing and operating a local HOSA chapter and its program of activities, for integrating HOSA leadership and technical skill development in HSE classroom instruction, and for participation by HOSA members and officers in local, district/regional/area, state, and international HOSA program activities.



ACKNOWLEDGEMENTS

Many persons have contributed to the publication of the comprehensive **HOSA HANDBOOK**. To those who have ensured the future of this organization through their contributions to this Handbook, please accept the sincere thanks of all current and future HOSA members.

Special appreciation is due the following individuals who contributed information and/or written research which generated the First Edition published in 1982 which includes Sections A and B:

Barbara James (SC, deceased), Catherine Junge (TX, KS and USDE, deceased), James Keeton (TX), Nancy Moore (NJ, deceased), Ruth-Ellen Ostler (NY, deceased), Kent Ray (MI), Lorraine Summers (IL), Linda Walston (NC). A particular debt of gratitude is due Nora Bennett Smith, a member of HOSA's first National Headquarters Management firm, KENORA Enterprises, who coordinated and edited the final document for the first edition.

Efforts to update and revise Sections A and B and the development of Section C were initiated and authorized by the HOSA, Inc. Board of Directors under Board Chairmen James Keeton (TX), Lorraine Summers (IL), Barbara James (SC), Ruth-Ellen Ostler (NY), and Norma Walters (AL) and coordinated by the National HOSA Communications and Related Materials Committee under Chairmen Ruth Mulford (NY) and Helen Swaincott (PA) and the Competitive Events Committee under Barbara James (SC), Kent Ray (MI) and Ruth-Ellen Ostler (NY).

The HOSA, Inc., Board of Directors would like to express appreciation to the following HOSA members for working on the Research and Development Project: Ruth Mulford (NY), Chip Harris (DE); Dr. Ruth-Ellen Ostler (NY), Dr. Norma Walters (AL), Nora Bennett Smith (DC), and Helen Swaincott (PA). The Research Project was funded pursuant to the budget and guidelines established by the HOSA, Inc. Board of Directors to select the above committee members to write and edit "A Guide to Organizing and Managing a HOSA Chapter," for publication in 1985.

A very special thanks to Ruth-Ellen Ostler, Ph.D., for her contributions to the HOSA History. Dr. Ostler was a Past Chairman of the HOSA, Inc. Board of Directors, and a HOSA Honorary Life Member. As Director of the HOSA Competitive Events program, Dr. Ostler implemented several systems that raised the quality of competition to a standard more acceptable to the health care industry and expanded the number of events available to HOSA members. Dr. Ostler died in December 1994.

Deepest appreciation is expressed to all who contributed in so many ways to the Handbook sections and especially to Jim Koeninger and Karen Elias Koeninger of HOSA's current Headquarters Management firm, Corporate Education Resources, Inc., referred to as CERI, who continue to provide direction and production services in the development and publication of the comprehensive **HOSA HANDBOOK**. It would be remiss if we did not thank Kim Smith, former Assistant Director, for her years of imagination and implementation as well as Bergen Morehouse, Director of Competitive Events, along with Jan Mould (Tennessee) and Carie Staub (Idaho), Assistant Directors for Competitive Events, for their untiring work to ensure the success of the competitive events program.

WHAT IS HOSA-FUTURE HEALTH PROFESSIONALS?

HOSA is an organization for secondary and postsecondary/collegiate career and technical education students enrolled in health science (and pre-technical health science) or biomedical science education programs, or for students who are planning to pursue a health career. The activities of HOSA are an integral part of the instructional program that provides occupational skills as well as leadership skills. HOSA opportunities are also available to future health professionals through Area Health Education Centers, Medical Explorers, other health community sponsors, and in schools where Health Science or Biomedical Science Education programs do not yet exist. HOSA was officially formed in November of 1976 and comprises state associations organized under the auspices of the appropriate state education agency or other approved institution.

Local HOSA chapters provide programs and activities to help individuals develop their physical, mental, and social well-being. Members strengthen their leadership and citizenship abilities through interaction with professional, business, and other student organizations.

HOSA members have the opportunity to share experiences with other people involved in the health professions. Members build confidence in their own ability to develop skills that will lead to successful employment in the field of health.

HOW DOES HOSA WORK?

A student enrolled in any Health Science or Biomedical Science Education program (for example, Dental Assisting, Medical Assisting, Medical Laboratory Assisting, Practical Nursing, and others) and/or are interested, planning to pursue or pursuing a career in the health professions at any high school or postsecondary/collegiate institution across the country has the opportunity to join with other students and form a local HOSA chapter under the supervision of the classroom instructor, who also serves as the HOSA chapter advisor. These students and the advisor complete the online chapter affiliation through the HOSA website at www.hosa.org and submit the affiliation fees to HOSA. Membership cards for HOSA Chapters can be purchased through the HOSA Store. Additionally, HOSA provides a downloadable membership certificate on the HOSA website. The chapter is also responsible for affiliating with the state association as directed by the state advisor.

HOSA members are involved in community service, career-related and leadership development activities. Students from all local chapters attend regional and statewide conferences for leadership training and chapter management workshops and participation in HOSA competitive events that test and recognize students' competencies and related skills in their chosen health care field. All affiliated state associations conduct state leadership conferences and send as many members as possible and state competitive event finalists (three) in each competitive event and division to the annual **HOSA International Leadership Conference** in June.

The activities of HOSA chapters are integral to the instructional program and are supported by the United States Department of Education.

PURPOSE, MISSION STATEMENT AND GOALS OF HOSA

PURPOSE

The **purpose** of the HOSA organization is to develop leadership and technical HOSA skill competencies through a program of motivation, awareness, and recognition, which is an integral part of the Health Science or Biomedical Science Education instructional program.

MISSION STATEMENT

The mission of HOSA is to empower HOSA-Future Health Professionals to become leaders in the global health community through education, collaboration, and experience.

GOALS

The **goals** that HOSA believes are vital to each member are:

- To promote physical, mental, and social well-being.
- To develop effective leadership qualities and skills
- To develop the ability to communicate more effectively with people.
- To develop character.
- To develop responsible citizenship traits.
- To understand the importance of pleasing oneself as well as being of service to others.
- To build self-confidence and pride in one's work.
- To make realistic career choices and seek successful employment in the health care field.
- To develop an understanding of the importance in interacting and cooperating with other students and organizations.
- To encourage individual and group achievement.
- To develop an understanding of current health care issues, environmental concerns, and survival needs of the community, the nation, and the world.
- To encourage involvement in local, state, and national, and international health care and education projects.
- To support Health Science or Biomedical Science Education instructional objectives.
- To promote career opportunities in Health Care.

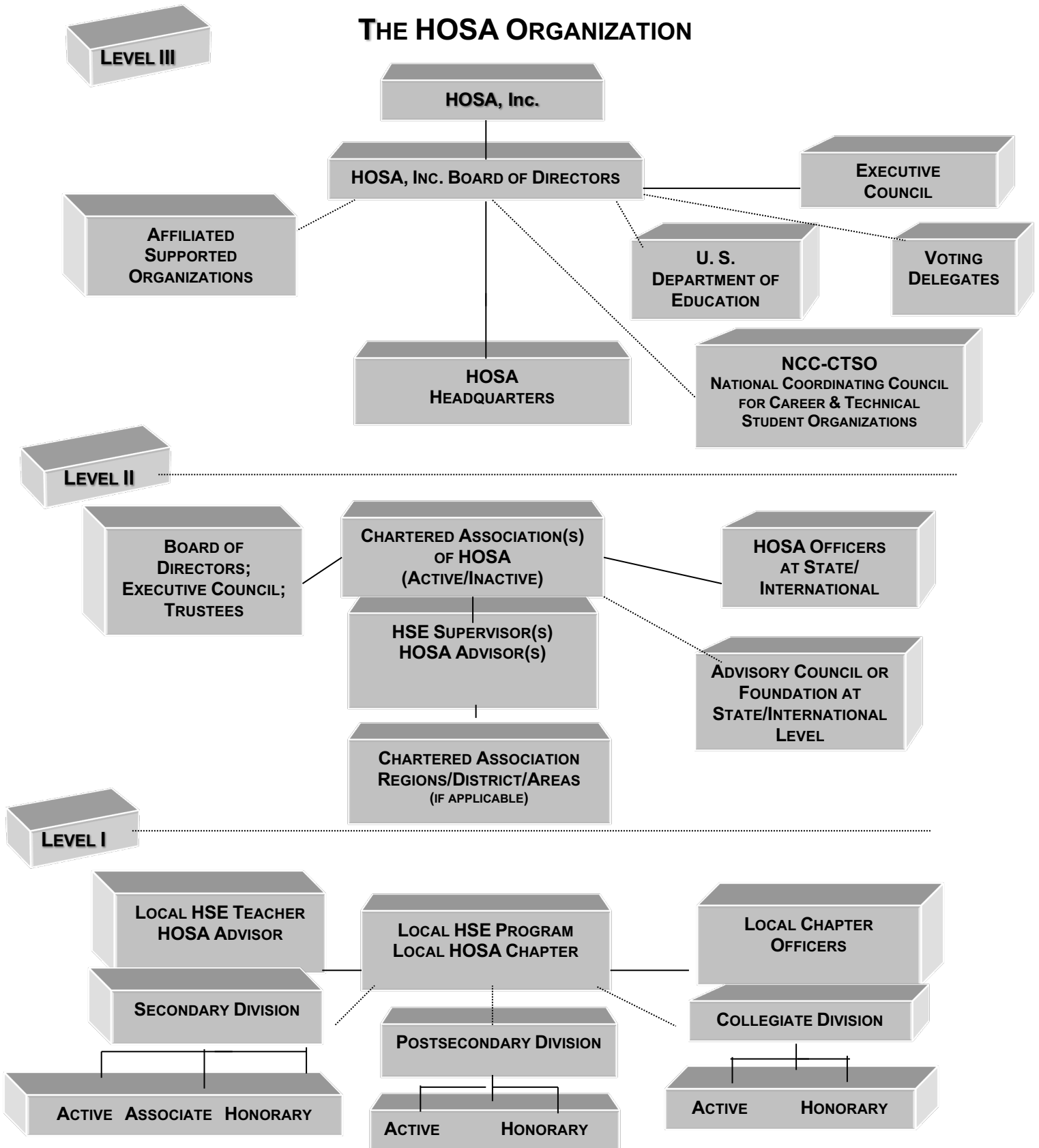
HOSA’S ROLE IN BUILDING A PIPELINE FOR FUTURE HEALTH PROFESSIONALS

HOSA and Health Science or Biomedical Science Education:

- Are well-positioned in educational institutions to draw positive attention to the health professions among elementary, middle school and high school students.
- Can recruit qualified students to the Health Science or Biomedical Science Education programs in secondary, postsecondary, and collegiate institutions.
- Are prepared to deliver high quality classroom instruction and dynamic chapter activities to enhance preparation for the health care professions.
- Can provide opportunities for students/members to interface with the health care community and network with those in their specialization of choice.
- Are committed to increasing the number of students that enroll in Health Science or Biomedical Science Education programs.
- Are committed to building a “pipeline” of qualified students interested in pursuit of a career in the health professions.
- Are willing to partner with health care providers to be a solution to recruiting and preparing health care workers for the future.

HOSA is Part of the Solution!

THE HOSA ORGANIZATION



LEVELS OF HOSA

Level III - HOSA Organization

- HOSA-Future Health Professionals is recognized by the United States Department of Education.
- Chartered Associations affiliate with HOSA and are classified as inactive or active chartered associations.
- Members must affiliate with HOSA at the International as well as the local and state levels.
- A representative from each chartered association is a member of HOSA, Inc., the corporate body.
- The HOSA, Inc. corporate body elects non-student members to the Board of Directors.
- The HOSA, Inc. Board of Directors is the governing body for HOSA.
- HOSA Headquarters staff receives direction from the Board of Directors.
- The Executive Council Advisor is a member of the HOSA Management Team.
- The Executive Council (composed of the elected officers) presides and conducts the business of the organization through the annual meeting of the Delegate Assembly.
- Chartered association voting delegates in the Delegate Assembly consider business of HOSA, elect executive council members at the International Conference, amend bylaws, make crucial decisions, and approve action.
- HOSA, Inc. Standing and Ad-hoc Committees plan and conduct programs/activities.

Level II – Chartered Associations

- Chartered Associations should be supported by the appropriate state education agency or a HOSA, Inc. Board approved sponsoring agency/institution.
- Local chapters must affiliate with the state/international association as well as HOSA at the International level.
- State/Country and district/regional/area officers are elected by local chapter voting delegates.
- One person serves the chartered association as the HOSA Advisor representing the Department of Education and/or sponsoring agency/institution.
- A Board of Directors/Trustees and/or Executive Committee provides/advises/governs the chartered association.
- Outstanding local chapter members represent their chapter at district, regional, state and country activities and chapter voting delegates conduct business of the chartered association.
- Chartered associations elect/select voting delegates.

Level I - Local Chapters

- The local HOSA chapter is composed of secondary, middle school and/or postsecondary/collegiate students pursuing a health career.
- The health science or biomedical science instructor serves as the HOSA chapter advisor. When the chapter is not part of Health Science or Biomedical Science Education, a faculty member or health care community professional may serve as chapter advisor.
- Chapter HOSA members elect local officers.
- Chapter members participate in community/school, district/regional/area, and state/international association activities, and HOSA programs as eligibility and schedules permit.

WHY AFFILIATE WITH HOSA?

- HOSA is the only career & technical student organization (CTSO) designed to serve exclusively the needs of students in Health Science or Biomedical Science Education programs.
- HOSA is for and led by students.
- HOSA is recognized by the U.S. Department of Education and the Health Science or Biomedical Science Education Division of the Association for Career & Technical Education (ACTE) as an integral part of Health Science Education via an official policy statement.
- HOSA promotes and develops respect among students, teachers and the community for Health Science or Biomedical Science Education.
- HOSA's International Leadership Conference and Competitive Events Program are included on the list of approved activities of the National Association of Secondary School Principals.
- HOSA provides opportunities for students enrolled in Health Science or Biomedical Science Education programs to sharpen their occupational skills while developing valuable leadership qualities.
- HOSA members learn to appreciate their ability to help people who need health care or a better understanding of health-related issues. Getting involved in health issues is central to HOSA.
- HOSA promotes the development of good decision-making skills that can help members reach full career potential.
- HOSA encourages skill development and a healthy competitive spirit through participation in the Competitive Events Program.
- HOSA promotes fellowship through social and recreational activities.
- HOSA provides members with leadership training.
- HOSA recognizes members and group accomplishments through the HOSA Recognition Events.
- HOSA involves members actively in activities at all levels - providing members with the opportunity to travel, meet new people, and share ideas.
- HOSA supports Health Science or Biomedical Science Education instructional objectives.

OFFICIAL BRAND AND COLORS

HOSA EMBLEM

The emblem of HOSA is the word “HOSA” horizontally written in the color navy with a maroon-colored incomplete circle partially surrounding the letters “H,” “O,” “S,” and a tan-colored triangle contained within the letter “O” followed by the words “Future Health Professionals” written in the color maroon.



HOSA COLORS

- Navy blue represents loyalty to the health care profession.
- Medical white represents purity of purpose.
- Maroon represents compassion of HOSA members.

HOSA Tagline: HOSA-Future Health Professionals

HOSA’s Core Values – Learn. Lead. Serve. Innovate.

- We value **learning**. We are committed to learning and becoming respected, knowledgeable, and skilled health professionals. We will respect the experiences and contributions of our teachers, peers and patients and seek to learn from them.
- We value **leadership**. We will serve as role models in our academic program, profession, and community. We will be ethical, accountable, and trustworthy. We will use our influence to empower others to strive for excellence.
- We value **service**. We are dedicated to serving others with compassion. We believe that individuals are important, and we will treat everyone with respect and care.
- We value **innovation**. We are dedicated to enriching the lives of others. We will continuously seek the knowledge and skills to address challenges and improve the health professions.

HOSA Creed

The HOSA Creed was revised at the 2017 HOSA Inc. Board of Directors’ meeting as submitted by the Committee for Distinctive Symbols and Terminology. It reads as follows:

I recognize the universal need for quality, compassionate healthcare.

I understand the importance of academic excellence, skills training, and leadership development in my career pathway.

I believe through service to my community and to the world, I will make the best use of my knowledge and talents.

I accept the responsibility of a health professional and seek to find my place on a team equally committed to the well-being of others.

Therefore, I will dedicate myself to promoting health and advancing healthcare as a student, a leader, an educator, and a member of *HOSA-Future Health Professionals*.

OFFICIAL HOSA UNIFORM AND DRESS CODE POLICY

The HOSA dress code will be strictly enforced for all conference activities.

General Session Dress (REQUIRED):

Student delegates not adhering to the following dress code will not be admitted in to the general sessions.

HOSA's Official Uniform Policy

- Tailored navy blazer with emblem affixed over the heart.
- Matching navy slacks or navy knee length skirt
- White, closed - neck, tailored dress shirt suitable for tie or scarf
- Accents: maroon HOSA scarf or maroon or navy long tie
- Closed - toe shoes blue or black (hose optional)
- Belt (blue or black)
- Head covers that are required for religious purposes or to honor cultural tradition are allowed.

Non-uniform Alternative:

- Black or navy-blue suit
- White, closed-neck, tailored dress shirt with tie (maroon or navy long tie)
- White blouse (can be member's choice)
- Members may choose to wear knee-length skirt or slacks
- Closed-toe shoes blue or black shoes (hose optional)
- Belt (blue or black)
- Head covers that are required for religious purposes or to honor cultural tradition are allowed.

NOTE: This policy is for student delegates. Advisors, family members, and guests are not required to wear the HOSA uniform or the black or navy suit with a white shirt to the general sessions.

Competitive Event's Dress Attire:

Delegates must adhere to the policy as specified in the individual competitive event guidelines for the orientation and event in which they are competing. Bonus points will be given according to the individual guidelines.

If the competitive event guidelines identify business **attire** is appropriate, competitors can either wear the official **HOSA uniform** or any of the following dress is acceptable (shoes and clothing can be of ANY color):

- Suit
- Shirts
- Sports Jackets
- Skirts
- Pants
- Dresses
- Jackets
- Shoes (closed-toe; open-toe; heeled sandals are permitted)

If the competitive event guidelines identify clinical uniform or require attire appropriate to the occupational area for skill events, the following dress is acceptable (scrubs can be of any color/design, with or without a HOSA emblem):

- Scrubs
- Clinical shoes or tennis shoes (must be closed toed)
- Khaki Pants with Polo Top
- Note: Shorts and flip-flops are not acceptable HOSA clinical attire.

Official Function Dress (Workshops, HOSA Expo, and Social Activities):

Appropriate business attire is required for official functions including the HOSA Expo and workshops in conjunction with the ILC. Social activities dress code will include everything EXCEPT: athletic clothing, swimwear, sheer or mesh clothing, tank tops, muscle shirts, crop tops and clothing with obscene or suggestive printing. Shirt straps must be two inches wide, and the length of shorts and skirts must be at minimum to the fingertip

A HOSA-Future Health Professional member should dress appropriately, based on the Official Dress standards outlined for the gender to which they identify.

For more information on HOSA's dress code, please refer to HOSA's Policy and Procedure Manual at hosa.org/publications.

MEMBERSHIP CATEGORIES

Here is an explanation of the HOSA membership categories:

ACTIVE MEMBERSHIP:

SECONDARY - These shall be secondary students who are or have been enrolled in a Health Science or Biomedical Science or an organized health career awareness program or are interested in, planning to pursue, or pursuing a career in the health professions. They shall pay affiliation fees as established by the local, state, national and international organizations, and shall be eligible to hold office, participate in HOSA activities, and, if chosen, serve as voting delegates, and represent their chapter and state in HOSA affairs.

POSTSECONDARY - These shall be students enrolled in a postsecondary health science education program at less than the baccalaureate level.

The official definition for postsecondary members of HOSA for the purposes of Competitive Events is:

A postsecondary student is one who (a) is enrolled in a state-approved postsecondary program or college level program; (b) has received a high-school diploma (or its equivalent) and/or has been out of the continuous, sequential educational system prior to the current Health Science Education enrollment for two or more years prior to the current year's HOSA International Leadership Conference.

Even though adult students may be enrolled in a secondary program, they may not compete in secondary competition at the HOSA International Leadership Conference. When students satisfy one or more of the criteria of being postsecondary/collegiate students, they are to be classified as members of the postsecondary/collegiate division of HOSA.

They shall pay affiliation fees as established by the local, state, and international organization, and shall be eligible to hold office, participate in HOSA activities, and, if chosen, serve as voting delegates, and represent their chapter and state in HOSA affairs.

COLLEGIATE - These shall be students enrolled in a health career program in pursuit of a baccalaureate degree. Active collegiate members shall be members of chapters in good standing as established by the local, state, and international organization. Collegiate members shall be eligible to hold office, participate in HOSA activities, and, if chosen, serve as voting delegates and represent their chapter and state in HOSA affairs.

The official definition for collegiate member of HOSA for the purposes of Competitive Events is: A collegiate student is one who is seeking a baccalaureate degree.

MIDDLE SCHOOL - shall be composed of middle school students who are in grades 6-8 and are interested in or planning to pursue a career in the health professions. The official definition for middle school members of HOSA for the purposes of Competitive Events is: A middle school student is one who: a) is enrolled in a state-approved health science program or is planning to pursue a career in the health professions; and b) has not been promoted to a secondary institution (grades 9-12) prior to the state's annual conference.

PROFESSIONAL - ADVISOR – The person(s) responsible for advising students on Health Science or Biomedical Science activities that relate to HOSA. They shall pay affiliation fees, but may not vote, hold office, or compete for HOSA member awards.

PROFESSIONAL (Other than HOSA Chapter Advisor) - These shall be health professionals and other adult members of the community who wish to assist and support the HOSA program of activities. They shall pay affiliation fees, but may not vote, hold office, or compete for HOSA member awards.

ALUMNI - These shall be former active members who have legitimately separated from a Health Science or Biomedical Science Education program, in good standing with their chapter, and who have paid their local, state, and national fees. They have the rights and privileges of active members except the rights to vote, to hold elective office, or enter competitive events.

HONORARY - These shall be persons who have made significant contributions to the development of Health Science or Biomedical Science Education and/or have rendered outstanding service to HOSA. The names of individuals to be considered for membership shall be submitted to the HOSA, Inc. Board of Directors for its approval by a three-fourths vote. They are lifetime members of the HOSA organization and they do not pay affiliation fees.

Some chartered associations have established a State Honorary Membership category. Unless also accepted for HOSA Honorary Membership at the international level, such individuals are subject to HOSA affiliation fees, paid by the chartered association, local chapter, or the individual.

HOSA MEMBERS

HOSA members share one common goal in participating in chapter projects. Members work to develop qualities and skills that will assist them in assuming leadership roles now and in the future. All chapter activities should help to stimulate and support HOSA members to move toward responsible, professional roles in health care.

HOSA CHAPTERS

The local HOSA chapter provides numerous opportunities for personal leadership and career development. HOSA members have a great deal of input in determining the kinds and scope of activities that a local chapter undertakes. Community and school service projects and volunteer and educational programs in the community are just a few of the activities of an active HOSA chapter.

HOSA CHARTERED ASSOCIATIONS

The leadership for the chartered association is provided by the Health Science or Biomedical Science Education State Supervisor or by the HOSA State/Country Advisor, the Executive Council and Board of Directors or Trustees. The membership of these governing bodies is determined by state/country policy and may vary.

Chartered associations may provide the following services to local chapters:

- Develop a program of work for the year and conduct/coordinate activities.
- Advise and assist schools seeking charter status from HOSA.
- Conduct district, regional and/or state HOSA conferences that will include leadership and career development workshops and activities, competitive events, business sessions, general assemblies, and other activities as desired by state membership.
- Provide guidance to the state officer leadership team.
- Provide leadership in the overall development and promotion of HOSA within the state through the distribution of brochures, newsletters, or other informational material.
- Maintain contact with the HOSA Headquarters, provide information needed and facilitate the distribution of information and materials from HOSA to local chapters.

ACTIVE CHARTERED ASSOCIATION AFFILIATION GUIDELINES

A chartered association, international or territorial association may apply for HOSA affiliation when the following conditions are met:

1. A minimum of five active local chapters in the state -- or an appropriate number in the territory or country -- have affiliated.
2. A constitution and/or bylaw consistent with the HOSA's Bylaws have been adopted.
3. There are provisions for revising the state, territory, or international constitution and/or bylaws which do not conflict with the HOSA Constitution or Bylaws.
4. All members of the chartered association must be internationally affiliated members.
5. Planned activities are in harmony with the ideals and purposes of HOSA.
6. Application for a HOSA charter is submitted.

A charter association shall be issued to HOSA state, territorial, or country associations by the Board of Directors upon receipt of:

- A properly executed application or request which establishes the eligibility of the group as indicated in the above requirements.
- Agreements for annual payment of HOSA affiliation fees for all state, territorial or country members, both initial and supplementary, as necessary.
- A copy of the state, territorial or country constitution and bylaws which does not conflict with HOSA Constitution and Bylaws.

It should be noted that each chartered association of HOSA shall be responsible for all operational activities within the state, territory, or equivalent geographic unit.

INACTIVE STATE AFFILIATION GUIDELINES

1. This status is granted by the Board of Directors as a means of encouraging a state to move toward active association status.
2. Inactive state associations are administered through the HOSA Headquarters until an acceptable agency or organization is located to accept the responsibilities of administering the state association (secondary and/or postsecondary/collegiate).
3. Inactive state associations shall select non-voting delegates as provided by the temporary operational bylaws provided by the Board of Directors.
4. Inactive status will be granted when the following conditions are met:
 - a. All current annual affiliation fees have been paid to HOSA as required.
 - b. All current reports have been submitted to HOSA as requested by the Board of Directors.
 - c. All proposed changes in the state or territorial constitution and/or bylaws impacting HOSA Bylaws have been approved by the Board of Directors.
 - d. All current activities are in harmony with the ideals and purposes of HOSA.

All unaffiliated Health Science Education (HSE) programs in states are encouraged to join HOSA-Future Health Professionals. Upon request by local and/or state HSE professionals, HOSA will help in establishing one or more HOSA chapters and secure active or inactive state association status.

Call (800) 321-HOSA when you want to join **HOSA-Future Health Professionals!**

HOSA CHARTERED ASSOCIATIONS

The following states/territories/countries have been issued charters by HOSA.

State Associations	Charter Date
Alabama*	November 1976
Alaska	June 2008
American Samoa	June 2016
Arizona	June 2005
Arkansas	November 1984
California	June 1987
Canada	June 2015
China	June 2019
Colorado	October 1980
Connecticut	June 2005
Delaware	December 1978
District of Columbia	July 1980
Florida	July 1978
Georgia	June 2000
Hawaii	June 2005
Idaho	June 2000
Illinois	April 1978
Indiana	May 1977
Iowa	May 1977
Kansas	October 1980
Korea	June 2022
Kentucky	April 1978
Louisiana	July 1980
Maine	May 1981
Maryland	April 1978
Massachusetts	September 2010
Michigan	September 1980
Minnesota	March 1978
Mississippi	December 1985
Missouri	June 1996
Montana	June 2004
Nebraska	June 1987
Nevada	June 2007
New Hampshire	July 1980
New Jersey*	November 1976
New Mexico*	November 1976
New York	October 1978
North Carolina*	November 1976
North Dakota	June 2014
Ohio	June 2007
Oklahoma*	November 1976
Oregon	January 1978
Pennsylvania	July 1979
Puerto Rico	June 1988
Rhode Island	June 2017
South Carolina	November 1978
South Dakota	June 2013
Tennessee	October 1977
Texas*	November 1976
Utah	December 1985
Vermont	June 2022
Vietnam	June 2025
Virginia	July 1980
Washington	June 1996
West Virginia	September 1995
Wisconsin	July 1978

* Founding Charter State

Unaffiliated States or Countries Currently with HOSA Membership

Germany
 Malaysia
 Trinidad & Tabago

GEOGRAPHICAL HOSA AREAS

Chartered associations are assigned to Western, Central and Eastern Regions. Representation for each region is attained through both the election of the Board of Directors and executive council.

Western Region	Central Region	Eastern Region
Alaska	Alabama	Canada
American Samoa	Arkansas	Connecticut
Arizona	Illinois	Delaware
California	Indiana	District of Columbia
China	Iowa	Florida
Colorado	Kansas	Georgia
Hawaii	Kentucky	Maine
Idaho	Louisiana	Maryland
Korea	Michigan	Massachusetts
Montana	Minnesota	New Hampshire
Nevada	Mississippi	New Jersey
New Mexico	Missouri	New York
Oregon	Nebraska	North Carolina
Texas	North Dakota	Ohio
Utah	Oklahoma	Pennsylvania
Vietnam	Puerto Rico	Rhode Island
Washington	South Dakota	South Carolina
	Tennessee	Vermont
	Wisconsin	Virginia
		West Virginia

- *Three geographic regions are established and specified in policies and procedures. Assignment to a geographic region is determined by the HOSA, Inc. Board of Directors.*

HOSA, Inc.

The term "**HOSA, Inc.**" refers to an organization that should not be confused with the student organization of HOSA. "**HOSA, Inc.**" is the legal identity of the corporate body responsible for the student program. Its members consist of those persons officially designated by the sponsoring agency or institution as the principal person directly responsible for HOSA and, if appropriate, Health Science or Biomedical Science Education in each affiliated state or territory. The primary purpose of **HOSA, Inc.** is to serve as the sponsor for the student organization known as **HOSA**.

BOARD OF DIRECTORS

The business of HOSA, Inc. is managed by a Board of Directors. The Board is composed of 17-21 members representing the following areas:

VOTING MEMBERS

- a. Three (3) members representing State HOSA: one from each region. (Three-year term)
- b. Three (3) local HOSA Advisors, secondary or postsecondary/collegiate: one from each region. (Three-year term)
- c. Three (3) representatives of the health industry. (Two-year term)
 - One representative from USPHS (ex-officio)
 - One representative from the HOSA-100 National Advisory Council.
 - One representative from the health industry (excluding USPHS and HOSA-100 National Advisory Council. This person could be from medicine, nursing, or allied health.)One (1) health science educator. (Three-year term)
- d. The President of HOSA. (One-year term)
- e. The President-Elect of HOSA. (One-year term)
- f. Two (2) student HOSA members: one from the Secondary Division and one from the Postsecondary/Collegiate Division. The Secondary Division and the Postsecondary/Collegiate Division members are elected at the International Conference by their respective Divisions. (One-year term)
- g. Three registered alumni members who are in health sciences postgraduate program or employed as health professionals. (Two-year term)
 - One registered HOSA Alumni member who is currently enrolled in a health science postgraduate or fellowship program.
 - One registered HOSA alumni member who is a medical, dental, nursing, public health, or pharmacy health professional.
 - One registered HOSA alumni member who is an allied health professional (Allied health may be defined as those health professions that are distinct from medicine and nursing or fields mentioned above. Examples of allied health professions include, but are not limited to, dental hygienist, medical technologists, occupational therapists, physical therapists, speech language pathologists, medical laboratory technician, certified athletic trainers, and medical assistant).
 - *Additional board positions are possible if and when the Board Chairman, Chairman-Elect, Immediate Past Chairman, and/or Secretary do not hold one of the standing board positions. These positions are considered voting members.*

NON-VOTING MEMBERS

The non-voting members of the HOSA, Inc. Board of Directors include:

- The Executive Director of HOSA
- The HOSA, Inc. Treasurer
- The Vice-President of the Association for Career & Technical Education (ACTE), Health Science Education Division, or designee.
- The President of the National Association for State Administrators of the Health Occupations Education, or designee.
- A Representative from the Advance CTE as recommended by the President of Advance CTE.

HOSA members are encouraged to submit recommendations and suggestions to the Board of Directors for its consideration through their Advisor or the HOSA Inc. designee. The Board meets annually in at a date determined by the Board of Directors, and via conference call as needed. The Board of Directors has several HOSA, Inc. Committees, which meet as needed including, but not limited to, the following:

- Educational Symposium Committee
- Executive Committee
- Marketing Committee
- Professional Development Committee
- Policy and Nominating Committee
- Scholarship Committee

HOSA, Inc. committees are chaired by an executive council member, member of HOSA, Inc. or a HOSA, Inc. Board member with staff oversight and include as members other executive council members, other HOSA, Inc. Board members, state advisors, local advisors, and elected HOSA members from Secondary and Postsecondary/Collegiate Divisions.

ELECTED HOSA EXECUTIVE COUNCIL

According to the HOSA Bylaws, there are eight officer positions for HOSA as follows:

HOSA EXECUTIVE COUNCIL

International President

President-Elect

Secondary Division

Postsecondary/Collegiate Division

Western Region Vice President

PSC Vice President

Central Region Vice President

PSC Board Representative

Eastern Region Vice President

Secondary Board Representative

The President-Elect is a two-year term and serves both the Secondary and Postsecondary/Collegiate Divisions of HOSA. Secondary and Postsecondary/Collegiate voting delegates elect a President-Elect at a joint Business Session at the annual International Leadership Conference. All other officers are elected by the voting delegates from their respective Divisions. President-Elect serves as President the following year. Both President and President-Elect serve on the HOSA, Inc. Board of Directors as well as the Secondary and Postsecondary/Collegiate Student Board representatives.

DUTIES OF HOSA EXECUTIVE COUNCIL

The duties of the Executive Council:

- HOSA Officers shall be available, as necessary, in promoting the general welfare of HOSA.
- The **International President** shall preside at the HOSA Conference and all HOSA officer meetings, make committee appointments (unless otherwise provided), and develop with the assistance of the Executive Council and the HOSA, Inc., Board of Directors, an Annual Program of Work. The President shall serve on the HOSA, Inc. Board of Directors, and Executive Committee.
- The **President-Elect** shall serve HOSA in any capacity as directed by the President and shall assume the duties of the President in his/her absence. The President-Elect shall succeed the President at the end of each term of office. The President-Elect shall serve on the HOSA, Inc. Board of Directors, and Executive Committee.
- The **Vice-Presidents** shall promote the growth and development of their HOSA Divisions within their areas in accordance with the Annual Program of Work. They shall serve as members of the Nominating Committee and in any other capacity as directed by the President.
- The Executive Council shall designate one Vice-President to record the minutes of all division or officer meetings and file such minutes and all other records and reports with the HOSA Headquarters within thirty (30) days following their presentation.

- The Executive Council shall designate one Vice-President to keep records and other materials of historic importance to the division, compile these materials into a yearbook for the division, prepare a narrative account of HOSA activities during his/her term of office and be responsible for publication, correspondence, and public relations between the member associations.
- The Executive Council shall designate one Vice-President to preside over division meetings when necessary.
- The **Board Representatives** shall represent Divisions on the HOSA, Inc. Board of Directors. They shall participate on Board Committees, carry out any other responsibilities as appointed or requested by the Chairman of the Board and report action to the HOSA Executive Council and membership.

The President may appoint a parliamentarian, with approval of the Board of Directors, to serve as a consultant in parliamentary procedure to the Board of Directors and to the Delegates to the International Leadership Conference. This person shall be one who is recognized as an authority in parliamentary procedure.

EXECUTIVE COUNCIL CANDIDATE INFORMATION

- Officer candidates shall be required to take the HOSA information and Parliamentary Procedure Examination. The qualifying score for these examinations will be set by the Board of Directors. Candidates must pass the written exam to be interviewed.
- Candidates for office must have at least Junior year classification in high school and be active members of HOSA.
- The Region Vice Presidents must reside in their respective geographic area at time of election.
- The Nominating Committee will interview all officer candidates. A nominating committee composed of no less than one member of the HOSA, Inc. Board of Directors, two secondary students from non-candidate states, two postsecondary/collegiate students – one from non-candidate state and the Postsecondary/Collegiate Vice President, and three Region Vice-Presidents shall be appointed by the HOSA, Inc Board of Directors. This nominating committee shall be appointed by the HOSA, Inc. Boards of Directors. This nomination committee shall interview qualified candidates and shall nominate no more than five candidates for each secondary and postsecondary/collegiate office. Candidates may also be nominated from the floor if they have met the qualifying requirements. A state association shall submit no more than two secondary and two postsecondary/collegiate candidates for office. It is the duty of this committee to nominate candidates for the elected executive council offices to be filled.
- Candidate(s) may be eligible to be nominated from the floor if they have met the qualifying requirements of the Nominating Committee.
- Officers except President shall be elected by ballot at the annual International Leadership Conference to serve for one year or until their successors are elected. President-Elect shall serve one year as President-Elect and one year as President. If a majority vote is not secured by any candidate, another round of balloting shall begin immediately during the business session with the candidate with the fewest votes removed from the ballot. Additional rounds of balloting will be held similarly until a candidate receives a majority vote. In the event a tie vote occurs with two candidates remaining, an additional runoff will be held. If the vote remains tied, an alternate selection method may be chosen by the Executive Council to break the tie.

- Candidates for Executive Council shall submit a required nomination form to the HOSA Office via their respective state association prior to the annual International Leadership Conference by a date designated by the Board. This information shall then be given to the Chairman of the Nominating Committee.
- Candidates must have a minimum of a 2.0 GPA on a 4-point scale.
- The information shall include verified statement of academic performance during the full school year previously completed; a statement of support and the signatures of the school principal, career and technical education director or dean, the local chapter advisor and parent/guardian; record of offices held in HOSA, including the affiliated state association or local chapter. Candidates must also complete and have signed by a parent/guardian, Executive Council Travel Policy Statement and any other forms required by the Nominating Committee.
- If elected, candidates must purchase their own official uniforms, and have the official uniform during officer training immediately following the International Leadership Conference during which they were elected.
- Executive Council members may not serve for more than one term except for President-Elect.
- Executive Council members may NOT serve concurrently as a HOSA and State Officer. Elected Executive Council members who hold state office must resign their state officer position.
- State associations in good standing may submit only ONE candidate per office and submit no more than four (4) candidates; two (2) secondary and two (2) postsecondary/collegiate.
- In the event of a vacancy in the office of President, the President-Elect shall succeed to that office. In consultation with the Executive Council, other vacancies in council offices may be filled by appointment by the HOSA, Inc. Board of Directors from the list of nominees for that office. When no previous candidate for that office is available, the HOSA, Inc. Board of Directors may select another qualified candidate. (Article IV, Section 8, HOSA Bylaws)

HOSA HEADQUARTERS

HOSA Headquarters is staffed by Corporate Education Resources, Inc., (referred to as CERI), a management consulting firm based in Southlake, Texas.

In July of 1983, the HOSA, Inc. Board of Directors made the decision to contract with a professional and experienced management firm rather than rent office space and hire full-time employees. The Board of Directors contracts with the management firm to provide all the necessary professional and support staff services, office space and complete membership services needed for the organization. Dr. Jim Koeninger, President, and Karen Elias-Koeninger, Executive Vice-President, are the principal management coordinators for HOSA under this agreement. Three professional staff members, as well as other support staff, are available to serve HOSA's increasing needs.

The HOSA, Inc. Board of Directors approves staffing at HOSA Headquarters. The current list of HOSA staff can be found at <https://hosa.org/hosa-headquarters-staff/>

The HOSA Headquarters staff provides membership services such as:

- Collecting and processing membership rosters and assessments
- Preparing and printing all HOSA publications
- Managing all financial and legal affairs of the organization
- Managing the annual HOSA International Leadership Conference
- Planning and arranging all HOSA, Inc. Board of Directors, Committee and Corporate meetings
- Developing proposals for and presentations to corporations and foundations seeking contributions and support for HOSA
- Recruiting members
- Representing HOSA at the ILC and chartered association meetings of affiliated or interested organizations/institutions
- Supervising executive council officer activities
- Conducting daily affairs of the organization and maintaining the HOSA Headquarters

HOSA FOUNDATION

In June of 1989, the HOSA Inc. Board of Directors chose to make the foundation dormant so there would be no conflict of interest with HOSA, Inc., a 501(c)(3).

History of the HOSA Foundation is as follows:

Dedicated to securing monies that can be used for enrichment programs to benefit students enrolled in Health Science Education programs and affiliated with HOSA, the HOSA Foundation was established. The primary mission of the HOSA Foundation was to provide funds to partially finance HOSA's aggressive membership expansion program. Ken and Nora Smith, KENORA Enterprises, were retained by the HOSA, Inc. Board of Directors as consultants to HOSA to help in the formation of the Foundation and to secure trustees as well as to identify new sources of revenue to help finance HOSA activities. The first meeting of the Board of Trustees was held on November 12, 1985, with Congressman Don Sundquist (TN), presiding. The successes enjoyed by the Foundation are due in large part to the dedication and commitment of Congressman Sundquist, the first Chairman of the Foundation Board of Trustees.

The first Vice-Chairman was Barbara James, HOSA Honorary Life Member, South Carolina.

Members serving on the first Foundation Board were:

Dr. Wallace Clark, American Medical Association
Ben Cotten, Legal Counsel (non-voting)
Anthony Jannetti, Jannetti, Inc.
Dr. Jim Koeninger, Executive Director of HOSA (non-voting)
Dr. C. Everett Koop, U.S. Surgeon General
Paul Locigno, International Brotherhood of the Teamsters
Gary Skibicki, Treasurer (non-voting)
Dr. Art Ulene, NBC and Cable News

HOSA Representatives:

By virtues of their positions, the following HOSA Representatives served one-year terms:
Chairman, HOSA, Inc. Board of Directors
Chairman-Elect, HOSA, Inc. Board of Directors
HOSA President
HOSA President-Elect

Immediately following the inception of the Foundation, the Trustees received two significant donations from the International Brotherhood of the Teamsters and G.D. Searle and Company.

The Foundation's efforts injected enthusiasm and additional resources into sharing the "HOSA story" with the health care industry and potential members.

HOSA CONGRESSIONAL ADVISORY BOARD

In July of 1980, the HOSA Board of Directors approved the formation of a Congressional Advisory Board. Serving as support group for HOSA, the Congressional Advisory Board (CAB) includes members of the U.S. House of Representatives and Senate from HOSA affiliated states. Established by the Board of Directors, members provide support, advice, and guidance on matters of national importance that may affect the organization as well as provide assistance toward the continued growth and development of HOSA. The CAB also acts in an advisory capacity to assist the overall development of health care and education as it relates to HOSA. The chairman of the Congressional Advisory Board serves as an ex-officio member of the Board of Directors. The first Chairman of the CAB was Congressman Robert Livingston from Louisiana. *Currently, this Board is inactive.*

COUNCIL OF HOSA HEALTH LEADERS

On November 30, 1979, the HOSA, Inc. Board of Directors approved the formation of the Council of HOSA Health Leaders. This Council is the major advisory board to the Board of Directors and is requested to provide advice on a wide range of association concerns including the development and implementation of health-related competitive handbooks, guides and audiovisual materials, the nature of the funding of the organization, the various learning activities provided at the local, state, national and international levels and other concerns that may come before the HOSA, Inc. Board of Directors.

This Council is designed to provide guidance by concerned groups and individuals to ensure that HOSA materials, activities and functions are directly related to the needs of both the public and private sector and to provide for the involvement of those people in meeting the needs of HOSA members.

HOSA-100 INTERNATIONAL ADVISORY COUNCIL

The HOSA-100 International Advisory Council serves as a vital champion of HOSA-Future Health Professionals. Council members provide HOSA with their professional expertise; their diverse knowledge of perspectives; their connections to local, state national or international resources, or colleagues; their philanthropic support or other valued assistance; and promote HOSA-Future Health Professionals as the pathway for young people interested in the pursuit of careers in health beginning in middle or high school and continuing in postsecondary and collegiate institutions.

HOSA-100 International Advisory Council Member List can be found at <https://hosa.org/hosa-100-national-advisory-council/>

HOSA AWARDS AND RECOGNITION

HOSA Certificates of Excellence are presented to the top ten finalists and medallions are presented to the first, second and third place winners in each competitive event at both secondary and postsecondary/collegiate levels.

A series of Special Awards are offered according to the eligibility criteria below.

AWARD CATEGORY	SPECIAL AWARD DESCRIPTION
<input type="checkbox"/> CADUCEUS AWARD	The nominee (individual or group) has demonstrated extraordinary leadership in promoting HOSA as the pipeline for young people to the health professions. This award recognizes the importance of health industry leadership in working collaboratively to assure a qualified healthcare workforce for the future.
<input type="checkbox"/> ABOVE AND BEYOND AWARD	The nominee has “exceeded expectations” in service to HOSA-Future Health Professionals at chapter, chartered association, or international level.
<input type="checkbox"/> EDUCATIONAL EXCELLENCE AWARD	The nominee (educator or educational agency) has demonstrated extraordinary leadership in the educational community at an international or chartered association level. The recipient’s vision and support enhance HOSA’s ability to integrate HOSA into the classroom by providing opportunities and experiences; thereby helping HOSA members achieve their educational goals to become future health professionals.
<input type="checkbox"/> LEADERSHIP IN COLLABORATION AWARD	The nominee has demonstrated exemplary service to HOSA through partnership opportunities. The award recipient plays a unique role in promoting HOSA-Future Health Professionals as a significant contributor to the health industry.
<input type="checkbox"/> GOVERNMENT LEADER AWARD	The nominee has demonstrated extraordinary leadership in an elected or appointed government agency. The nominee’s leadership supports the mission of HOSA and understands HOSA’s role in serving as the pipeline to recruiting and developing <i>future health professionals</i> . The award recipient supports the rights of all citizens to quality health care and the role of government in providing policies, programs and practices that protect those rights.
<input type="checkbox"/> HONORARY LIFE MEMBER	The nominee has made a significant contribution to the growth and improvement of HOSA-Future Health Professionals or provided financial and/or other support to one or more special HOSA initiatives.
<input type="checkbox"/> DISTINGUISHED ALUMNI SERVICE AWARD	This award is presented to an alumni member who has demonstrated remarkable service in supporting HOSA-Future Health Professionals
<input type="checkbox"/> OUTSTANDING ALUMNI MENTOR AWARD	This award is presented to an alumni member who has given back to the organization by being a mentor to <i>future health professionals</i> .
<input type="checkbox"/> HOSA HERO AWARD	The HOSA Hero Award recognizes accountable bystanders (HOSA members, alumni, and advisors) who take action and make a difference to save the life of others. Documentation must include a source to verify heroic action.
HOSA HALL OF FAME <input type="checkbox"/> CHARTERED ASSN. ADVISOR <input type="checkbox"/> LOCAL ADVISOR <input type="checkbox"/> HOSA MEMBER <input type="checkbox"/> ALUMNI MEMBER <input type="checkbox"/> HEALTH INDUSTRY PARTNER	The HOSA Hall of Fame recognizes one chartered association advisor, one local advisor, one member, one alumnus and one health industry partner who have rendered outstanding service to HOSA, health and biomedical science education and the health industry.
<input type="checkbox"/> OTHER:	Explain:

Nominations for these awards are encouraged and should be submitted to HOSA Headquarters by April 1 of each year. An award nomination form should be requested from HOSA Headquarters.

HONORARY LIFE MEMBERS

These are persons who made **significant contributions** to the development of HOSA and/or have rendered outstanding service to the organization. The success of HOSA is due in large part to the efforts of these professionals.

V. Divine Bauer, Alabama, 1980
Billie Ashmore, Alabama, 1980
Joan Birchenall, New Jersey, 1980
Lois Graham, New Jersey, 1980
Marian Thomas, New Mexico, 1980
Nancy Raynor, North Carolina, 1980
Linda Walston, North Carolina, 1980
Yvonne Bender, Oklahoma, 1980
Mary Randall, Oklahoma, 1980
James Keeton, Texas, 1980
Catherine Junge, Texas, 1980
Rita Mobley, Alabama, 1980
Joseph LaBar, New Jersey, 1980
Linda Pershy, New Mexico, 1980
Lynne McGee, North Carolina, 1980
Ann Jackson, Oklahoma, 1980
Earline Pittman, Texas, 1980
Mary Holstein, Indiana, 1980
Helen Powers, U.S. Office of Education, 1980
Wilma Gillespie, Kentucky, 1980
Joan Stoddard, Oregon, 1980
Eleanor Upton, North Carolina, 1980
Vice President George Bush, 1982
Harry Applegate, Delaware, 1982
Kenneth M. Smith, Washington, D.C., 1983
Nora Bennett Smith, Washington, D.C., 1983
Olivia Hoffmann, Washington, D.C., 1983
Dr. Robert M. Worthington, Washington, D.C., 1984
Dr. Ruth-Ellen Ostler, New York, 1985
Helen Dolan, New Jersey, 1985
K. Edwin Graham, Mississippi, 1985
Dr. Norma Walters, Alabama, 1986
Judy Turner-Fox, South Carolina, 1986
Barbara James, South Carolina, 1987
Jack Jackson, Texas, 1988
Wanda Wolf, Oklahoma, 1988
Christyne Thiele, Texas, 1988
Rosemarie Dunkelberger, Pennsylvania, 1989
Lorraine Summers, Illinois, 1989
Ruth Killough, Oklahoma, 1990
Helen Swaincote, Pennsylvania, 1991
Dr. Gerald Holman, Texas, 1991
Denise Sullivan, Washington, D.C., 1991
Laurene McLemore, Tennessee, 1992
Dr. Joyce Brandt, Iowa, 1993
Brad Hurley, Tennessee, 1993
Martha Koblisch, New Jersey, 1994
Helen Heidelbaugh, Pennsylvania, 1994
Judi Hansen, California, 1994
Vernice James, Oklahoma, 1995
Carolyn Lee, California, 1995
Carolyn Warner, Arizona, 1995
Carla Maloy, Oklahoma, 1997
Kim Smith, North Carolina, 1998
Paul Booden, Michigan, 1999
Patricia Eakin, Virginia, 2000
Jimmie Tickle, Virginia, 2000
Karen Batchelor, Texas, 2001
Cheryl Keever, North Carolina, 2002
Nancy Allen, South Carolina, 2003
Danita Sheppard, North Carolina, 2003
Betty Moak, New Jersey, 2003
Belinda Mahone, Texas, 2004
Joyce Borndahl, Wisconsin, 2004
Gerry Emmons, Tennessee, 2005
Regina St. George, Georgia, 2005
Teresa Williamson, Tennessee, 2006
Sandra Parker, Mississippi, 2007
Rebecca Davis, West Virginia, 2008
Captain Robert Tosatto, USPHS, 2008
Kristen Davidson, Utah, 2009
Mark Burley, Michigan, 2010
Sheila Carlton, Tennessee, 2011
Sam Schaffzin, Medical Reserve Corps, 2011
Tonia Moore-Davis, Tennessee, 2012
Lowell Doringo, Florida, 2013
Denise Abbott, Utah, 2014
Lynn Brooks, Montana, 2014
Jane Shovlin, Arizona, 2015
Lara Skaggs Morris, Oklahoma, 2016
Lloyd DeVault, Florida, 2017
Brock Rops, South Dakota, 2018
Peg Enslin, RN, Ed.D., Delaware, 2019
CAPT Thomas Pryor, 2019
Janet Villarreal, Texas, 2020
Jason Huff, Ohio, 2021
Randi Huniwell, Nevada, 2021
Elizabeth Bullock, Kentucky, 2021
Dana Stringer, Alabama, 2022
Dr. William & Mrs. Joan Stearman, USUHS, 2022
Jim Scott, Ohio, 2023
Peyton Holland, NTHS, 2023
Jim and Karen Koening, Texas, 2023
Marcus D. Henderson, MSN, RN, Pennsylvania 2024
Charles Tannachion, Florida, 2024
Cindy Beck, California, 2025

HOSA INTERNATIONAL LEADERSHIP CONFERENCE

The HOSA International Leadership Conference is an opportunity for members to learn from and share with fellow HOSA members from all chartered associations. Objectives of the International Leadership conference are:

- To provide a variety of educational and social learning activities at the ILC for HOSA members.
- To provide HOSA members the opportunity to share common experiences in leadership development, community service and understanding of their Health Science or Biomedical Science Education programs.
- To learn more about current health care issues and concerns at the local, state, and international levels in Health Science or Biomedical Science Education and the career technical student organization of HOSA which fosters attitudes of good ethical practices and respect for the dignity of work.
- To provide the opportunity for participation in and recognition of leadership and skill development through competitive learning activities.
- To conduct the necessary student organization of HOSA by the HOSA delegate assembly and HOSA, Inc. Board of Directors.

CONFERENCE ACTIVITIES

Many exciting learning activities are included in the agenda, such as:

- **Competitive Events.** The International Competitive Events Program provides members with numerous opportunities for recognition of achievement in individual or group competition.
- **Educational Symposium.** Several leadership and career development workshops are conducted at the ILC. Tours are often scheduled to a variety of health care facilities in the host city.
- **Exhibits.** Medical schools, allied health companies, colleges and health care organizations are invited to exhibit and share career and institutional information with the members and advisors.
- **Special Activities.** At least two sessions are conducted in which all Voting Delegates are in attendance. New Executive Council Members are elected in the Business Sessions. Social and recreational activities are planned for delegates in an informal atmosphere. Local sight-seeing and educational tours are encouraged.
- **General Sessions.** A motivating Opening Session, a Recognition Session that honors chartered associations and Individual Achievements, and the very elegant Awards Sessions are all part of the HOSA International Conference experience.

HOSA PUBLICATIONS

HOSA keeps its members regularly informed through the following publications published and distributed by the HOSA Headquarters:

HOSA E-MAGAZINE. The magazine of the HOSA is provided in electronic format at www.hosa.org. Articles and comments for this publication are welcomed and should be submitted to the Editor via e-mail at hosa@hosa.org.

HOSA HANDBOOK. The first edition was published in September of 1982 and one complimentary copy was sent to each chapter through the state advisors. The revised comprehensive edition is available online at www.hosa.org in three separate sections:

- Section A: HOSA - The Organization
- Section B: HOSA Competitive Events Program
- Section C: Guide to Organizing and Managing a HOSA Chapter

HOSA RELATED MATERIALS

Visit www.hosa.org to order HOSA Related Materials.

HOSA EMBLEMATIC SERVICES

HOSA chapters can view an online catalogue and order form from HOSA Supply Service which is the supplier of the official emblematic items - trophies, pins, notebooks, clothing items, stationery, jewelry, and other items bearing the HOSA emblem. For more information, contact:

Awards Unlimited
360 SW 27th Street
Lincoln, NE 68510
(800) 950-3553
(402) 474-0815
FAX: (402) 474-3782
<https://hosastore.amercommerce.com/>



The History of HOSA

When one looks at the strong, healthy, ever-growing international organization that HOSA has become:

Goal-oriented with sights on the future ...
serving secondary, postsecondary, collegiate students and alumni ...
and, in widely diversified health care delivery fields;

It is difficult to realize that the initial idea for this national group began as "a gleam in the eyes" of a few caring and far-sighted Health Occupations Education leaders in the 60's and early 70's and:

- was first conceived by six (6) charter states at the organizing meeting in Cherry Hill, New Jersey in November 1975
- was officially organized at a Constitutional Convention held in Arlington, Texas, in November of 1976
- attendees at the Constitutional Convention included state supervisors/advisors, teachers and over three hundred (300) student leaders
- comprised only six (6) states with nearly 6,000 student members
- focused on limited supportive nursing, dental, medical, and related occupations programs, as well as organized pre-technical programs in health careers approved by a State Department of Education.

EARLY HISTORY

In 1957 the then United States Office of Education realized that educational programs in health occupations were growing throughout the nation at such a pace that the first Health Occupations Program Specialist, Helen K. Powers, was appointed to supervise the field. As programs expanded, needs for a student organization for health occupations students began to emerge for students enrolled in these programs.

In 1960, early student organizational needs were met through Future Nurses Clubs and Vocational Industrial Clubs of America (VICA). The demand grew for a group that would provide the specialized programs of Health Occupations students. An organization called the Health Careers Clubs gained national strength, especially in states such as Texas, New Jersey, North Carolina, Alabama, New York, New Mexico, and others. These clubs focused especially on health career-oriented programs operating in academic high schools.

Health programming continued to grow and diversify. Health occupations programs were established in vocational and technical schools in many states. Health occupations educators began to see a need for an organized and united effort to consider common and unique concerns of health occupations. The American Vocational Association (AVA) emerged as a logical locus for such a group.

The need for a leadership organization to serve students enrolled in vocational Health Occupations Education programs was recognized at the time of the first meeting of the Health Occupations Education Division of the American Vocational Association (AVA-HOE) in December 1971. This group heard reports from several states of activities leading to the organization of health occupations students' associations. The AVA-HOE Division addressed this need when the newly elected Vice President, Dale Peterson, appointed a Task Force to: (1) study student clubs; (2) determine how they might better serve HOE students; and (3) examine whether a new organization was needed.

State associations were established in Texas (Texas Association of Health Occupations Students) in April of 1972; in New Jersey (Health Careers Clubs of New Jersey) in October 1972; Health Careers Clubs of North Carolina was organized in 1973; OHOSO (Oklahoma Health Occupations Student Organization) in 1974.

The Seventh Report (published in 1972) of the National Advisory Council for Vocational Education was devoted to a description of the expanding visibility and support of vocational student organizations. This report stated that a new organization, designed to serve students in health occupations, "has been organized at the state level and will shortly seek a national charter. And there will be others."

Further action was taken by the HOE Division during the AVA Convention in Chicago in December 1972. Joan Stoddard submitted the Task Force report presented by James L. Navara, Oregon Board of Education, "A Feasibility Study for a Vocational Youth Organization for the Health Occupations Curriculum." During the HOE Division business meeting, the members adopted a "Position Paper on Student Organizations in the Field of Health Occupations Education." This paper stated that the HOE Division of AVA should "serve a facilitating role in assisting the various states and/or local groups to develop the type of organization each deems most appropriate to their settings."

Members of the HOE Division took further action during the 1973 AVA Convention in Atlanta, Georgia. The HOE Vice President was directed to "inform by letter the AVA Board of Directors and the National Advisory Council on Vocational Education of action taken by the HOE Division at this meeting -- namely, to endorse the creation of a leadership organization for health occupations students and work with the staff of AVA to develop procedures for implementing the above action."

Vice President Wilma Gillespie presented a report, "A Statement of Need," to the AVA Board of Directors during the July Board Meeting, 1974.

HOSA WAS BORN . . .

Appointed by the AVA Vice President of the HOE Division, a Core Planning Group was convened at the Brown County State Park, Nashville, Indiana, on July 23-25, 1974. This meeting was hosted and organized by the Indiana State Department of Education, Department of Vocational Education, under the Co-Chairmanship of V. Divine Bauer (HOE Supervisor, Alabama) and Mary Holstein (HOE Supervisor, Indiana). Resource persons included a USOE representative. In addition to Alabama and Indiana, the HOE supervisors for New Jersey and New York were present. Teachers and student representatives from some of these states were present and speakers from other national organizations addressed the group.

The report of the Core Planning Group was presented to the Policy Committee of the HOE Division at a meeting in St. Louis, Missouri, on March 6-7, 1975. The Policy Committee endorsed the recommendation of the Core Planning Group "to encourage those states with a viable statewide student organization to cooperate in forming a charter organization." The meeting established a student organization planning committee "to facilitate the efforts by states who now have viable HOE student organizations to (1) expedite seeking a national charter, and (2) devise ways to assist other states in their organizing efforts." Members of this committee were the HOE State Supervisor and/or his/her designee from the states of Alabama, New Jersey, Oklahoma, and Texas.

At the third annual conference of the Texas Association of Health Occupations Students (TAHAS) in San Antonio, Texas, on March 14, 1975, AVA Vice President Wilma Gillespie presented the keynote address entitled "And There Will Be Others." This message was a challenge to set in motion the activities necessary to seek a national charter.

On November 4-7, 1975, through the leadership of the State Department of Education and Division of Vocational Education in New Jersey, eighteen representatives from all six states having statewide health occupations education student organizations met to plan a national leadership organization. Representatives (state officers and state HOE supervisors from the six states which included Alabama, New Jersey, New Mexico, North Carolina, Oklahoma, and Texas) voted to form the American Health Occupations Education Student Organization-AHOESO (later changed to HOSA-Future Health Professionals).

The Inn of the Six Flags in Arlington, Texas, was the site of the **exciting Constitutional Convention** held November 10-13, 1976 and attended by 384 persons including delegates and advisors from the six states having organized state associations and interested persons from twelve other states. The Convention provided a formal structure for the new student organization. Joan M. Birchenall (NJ) presided as the crucial elements of the organization were formalized.

- The name was shortened to "Health Occupations Students of America (HOSA)" and bylaws were adopted.
- The first set of national officers was elected. Lynne McGee of North Carolina was the first National HOSA President.
- National HOSA colors were selected: maroon, medical white, and navy blue, which prevail today.
- A contest was designed to select a National HOSA motto and a HOSA emblem.
- Oklahoma was selected as the site and Spring 1978 as the date for the first National HOSA Conference. The Spring date in 1977-78 was selected to provide time for dissemination of information, for state and local organizing efforts and as a culmination of the first full year of HOSA.

THE FIRST THREE YEARS . . .

In June of 1977, the first HOSA newsletter was published and in September of 1977 a new policy statement was issued from the U.S. Office of Education and approved by Ernest L. Boyer, the U.S. Commissioner of Education, which endorsed all National Vocational Student Organizations. The American Industrial Arts Student Association (AIASA) and Health Occupations Students of America (HOSA) were included in the policy statement.

In December of 1977 at the 71st Annual Convention of the American Vocational Association, the House of Delegates passed a resolution that the AVA Board of Directors, (1) "Recognize - Health Occupations Students of America as the national student organization for Health Occupations Education -"; (2) "Promote the inclusion of - Health Occupations Students of America in the list of vocational student organizations recognized by the U.S. Office of Education"; and (3) "Support the inclusion of - Health Occupations Students of America in state planning for vocational education."

The first National Leadership Conference for HOSA was held in Oklahoma City, Oklahoma, on April 27-30, 1978. Since the Constitutional Convention (1976) charter states have increased over fifty percent (50%) and charters have been presented to Florida, Illinois, Indiana, Kentucky, Maryland, Tennessee, Minnesota, and Oregon. The emblem submitted by students of McNairy Central High in Tennessee was selected by the national voting delegates as the official emblem. Competitive events were held for both secondary and postsecondary members in Informative and Extemporaneous Speaking; Job Interviews; Medical Terminology; Poster; Emblem; and Motto. The National HOSA Uniform was selected and adopted at this meeting.

The second National Health Occupations Students of America (HOSA) conference was held June 26-July 1, 1979, in Cherry Hill, New Jersey. Five state charters were presented: Delaware, Pennsylvania, South Carolina, Wisconsin, and New York. In October of 1979, the HOSA Board selected KENORA Enterprises of Wilmington, Delaware, as the management firm to staff HOSA's National Office.

During the Third National Conference in Asheville, North Carolina, July 8-12, 1980, a major reorganization plan was adopted. HOSA, Inc. was formed to be the legally responsible agent for the student organization. The HOSA Bylaws were changed to HOSA Constitution and Bylaws to reflect the changes in the incorporation status. Under this new organization, the HOSA, Inc. Board of Directors was reorganized; HOSA received exempt status from the U.S. Internal Revenue; the logo was registered with the U.S. Copyright Office; and the Congressional Advisory Board was formed. Because of a competitive event, the HOSA Creed was selected as submitted by South Carolina HOSA. Parliamentary Procedure and Community Awareness Events were conducted as pilot events. Four new states were chartered: District of Columbia, Virginia, Louisiana, and New Hampshire.

HOSA MOVES FORWARD IN THE 80'S

At the Fourth Annual National HOSA Conference in Albuquerque, New Mexico, the American Diabetes Association was selected as the National Charity Project. HOSA's 501(c)(3) tax exempt status was received in June 1981, and eight new competitive events were added to the National Competitive Event Program. Four new states were chartered: Michigan, Colorado, Maine, and Kansas. A new position was added to the Board of Directors - Student Delegate-at-large.

On September 28, 1981, at the U.S. Department of Education, representatives of the nine vocational student organizations met in the office of Secretary of Education, Terrell H. Bell. The occasion was very special as Secretary Bell and Assistant Secretary for Vocational and Adult Education, Robert M. Worthington, signed the first official Policy Statement issued by the new U.S. Department of Education. Most importantly, this Policy Statement officially recognized and reaffirmed a cooperative and mutually beneficial relationship between the Department of Education and the Vocational Student Organizations. Don Cork, National HOSA President, was selected by the National Coordinating Council for Vocational Student Organizations to make special remarks in accepting the Policy Statement from Secretary Bell on behalf of all the student organizations. Also, in September of 1981, the HOSA Long Range Planning Committee met in conjunction with the National Conference Planning Committee in Chicago and developed the first five-year long-range plan for HOSA.

On February 10, 1982, the Vice President of the United States, George Bush, met with the National HOSA President, Don Cork; the National HOSA President-Elect, Kelly McCloud; and two representatives from each of our sister vocational student organizations. Don Cork and Kelly McCloud talked about HOSA and Health Occupations Education and presented Mr. Bush with an Honorary Life Membership in HOSA -- the highest award presented to an individual by the organization.

On June 8, 1982, Don Cork also represented HOSA in presenting testimony in support of federal funding for vocational education before the House Education and Labor Sub-Committee.

The Fifth Annual National Conference was held in Chicago, Illinois, June 24-26, 1982. Eight new HOE skill events were piloted, and the national voting delegates approved to expand the postsecondary category of HOSA membership. These changes provided for elected postsecondary national officers and a postsecondary student delegate-at-large position on the Board of Directors. The delegates also voted to increase the membership assessment fee. The official HOSA uniform policy was revised.

The development of HOSA has been methodical and the result of considerable involvement by those who believe in the instructional worth of the student organization. Given this foundation, the future of HOSA appears bright as new ways are sought to serve our membership.

HOSA MANAGEMENT HEADQUARTERS

In the early years, the Board Chairman's State Department of Education served as the national headquarters for HOSA. Thus, the first national HOSA Headquarters was located in Raleigh, North Carolina (November 1976 through spring 1978); the second, in Trenton, New Jersey (1978-79). By the third year it became evident that the management of this rapidly growing organization required more attention than could be provided through any one state's already busy supervisors in the education department. The HOSA Board of Directors advertised for management proposals. Four (4) proposals were submitted, and their representatives invited to make a presentation during the Board's meeting at the New Jersey Conference (June 1979). The Board selected KENORA Enterprises, with Ken and Nora Smith as owner/managers for HOSA's first management.

Legal contracts were developed, and records transferred, and the first National HOSA office was established in Wilmington, Delaware, in October 1979. HOSA's first national management team was Ken and Nora Smith. In the summer of 1982, KENORA moved its location and National HOSA's Headquarters to Washington, D.C., giving HOSA "presence" in the nation's capital. As membership grew, the HOSA Board required KENORA to assume increasing responsibilities. During these early years, the organization thrived, growing from a membership of 19,013 in 18 states in 1979 to 31,238 members in 29 states in 1982. Because of the additional demands, Ken and Nora Smith found it necessary to resign as HOSA's managers.

A National HOSA search committee, appointed in 1982 by Board Chairman Barbara James of South Carolina, worked with KENORA to refine the description and functions of a management firm for National HOSA with Ruth-Ellen Ostler (NY) as committee chairman. Bid proposals were solicited; twelve (12) were received from individuals and firms all over the country. Representatives from four (4) firms were invited to present their proposals during the Board's meeting at the Sixth National HOSA Leadership Conference in San Antonio, Texas.

It was at that time that National HOSA's second management firm was selected - The Leadership Development Institute, Inc. (LDI, Inc.) in Oklahoma City, Oklahoma, with Dr. Jim Koeninger, President, and Karen Elias, Vice President. The appointment was effective the summer of 1983.

Creative, experienced in leadership development activities, public relations approaches and in use of diversified media, this management team has built on the firm foundation established by KENORA Enterprises. It has assisted HOSA in reaching recognized strength and respected status in service to HOE students. Since 1985, when the HOSA Board decided to continue management firm coordination in preference to establishing a separate headquarters, with building and staff concerns, Dr. Koeninger and Ms. Elias-Koeninger have been officially designated as HOSA's Executive Director and Associate Director, respectively.

In August 1986, the location of LDI, Inc. and HOSA Headquarters was changed to Fort Worth, Texas. LDI moved to Irving, Texas in 1989. In 1996, the scope of LDI, Inc. was enlarged, and the company was renamed Corporate Education Resources, Inc. (CERI) The company then relocated to Flower Mound, Texas, and ultimately to Southlake, Texas, where HOSA Headquarters is located today. HOSA, through the Management office, offers a toll-free number to maintain contact with local chapters while delivering a variety of services to its members, advisors, and state associations. (800-321-HOSA)

HOSA MOTTO/EMBLEM/CREED/UNIFORM POLICY

The Annual Leadership Conference in April 1978 resulted in policy decisions basic to the operation of a student organization. A uniform policy consisting of navy slacks/skirt, vest, and jacket; white blouse/shirt; and a maroon scarf/tie was established.

The Delegate Assembly in Oklahoma adopted the original motto, which was submitted by the Florida State Association of HOSA and reads "The Hands of Youth Mold the Health of Tomorrow." Even before the 1979 Annual Conference in Cherry Hill, New Jersey, it was recognized that HOSA serves adults as well as youth, and the 1979 Delegate Assembly carried a motion to substitute "HOSA" for "Youth," so the current National HOSA motto reads, "The Hands of HOSA Mold the Health of Tomorrow."

In 1978, the official emblem was adopted by the Delegate Assembly action. The design is used today and is described as follows: "The circle represents the continuity of health care; the triangle represents the three aspects of humankind's well-being, social, physical and mental; and the hands signify the caring of each HOSA member." Colors, of course, are maroon, medical white and navy blue. This design was submitted by the Tennessee Association of HOSA. The HOSA emblem/logo was registered with the U.S. Copyright Office in 1980 and continues to be protected by federal law. It was not until the Third National HOSA Leadership Conference, held in Asheville, North Carolina in 1980, that HOSA's official creed was adopted, as submitted by South Carolina HOSA.

At the 2017 HOSA, Inc. Board of Directors Annual Meeting, the HOSA mission, creed, and emblem were reviewed and updated to reflect HOSA's new identify as HOSA-Future Health Professionals. This information was then brought before the Voting Delegate Assembly at the 2018 National Leadership Conference and accepted. The current versions are located on the HOSA website at <https://hosa.org/mission-purpose-goals-creed-core-values/>.

RECOGNITION BY U.S. DEPARTMENT OF EDUCATION

HOSA was one of two (2) new student organizations (the other was the American Industrial Arts Student Association - AIASA) recognized by the U.S. Office of Education in September 1977. At the time of recognition, the Department also issued its new policy statement designed to endorse all vocational student organizations. Ernest L. Boyer was U.S. Commissioner at the time. Such endorsement has been reaffirmed periodically, as in 1988, under Secretary William J. Bennett and again in 1990, under Secretary Laura F. Cavazos.

HOSA BOARD OF DIRECTORS

From its first set of Bylaws, HOSA - the national HOE student organization -- has provided for an adult sponsoring group. As specified in the present Board Bylaws, the "Object" of this group "...shall be to sponsor the student organization Health Occupations Students of America (HOSA) and to promote and sponsor the HOE-HOSA Partnership."

In 1980, incorporation of HOSA was transferred from New Jersey to Delaware and the Board of Directors was reorganized as HOSA, Inc. This body and its Board of Directors was formed to be the legally responsible agent for the student organization of HOSA. At the Third Conference in North Carolina (1980), HOSA Bylaws were changed to reflect the organization's incorporation status. The HOSA Constitution and Bylaws and HOSA, Inc. Bylaws were revised. Tax exempt status for the organization was also achieved. Initially comprising a relatively limited membership of HOE state supervisors, advisors and student officers with selected affiliate non-voting representatives, the HOSA, Inc. Board of Directors now includes Board membership composed of state and local advisors, International Executive Council Members, health care industry representatives, teacher educators, HOSA Alumni and state supervisors. A list of HOSA Board Chairmen and National Student Presidents is located in this section of the HOSA Handbook.

HOSA COMPETITIVE EVENTS

Initially, the founders believed that HOSA should sponsor leadership development programs and activities, not "contests." Thus, no competitive events were included in the Bylaws. As new states became interested and were chartered, however, numerous requests for some competitive experiences were received and the first Competitive Events Committee was appointed prior to the 1978 leadership conference. Four (4) events were implemented during the First Annual Leadership Conference in Oklahoma (1978). Each event focused on general health issues and/or across-the-board leadership development aspects of HOE programming: HOSA Poster (Health Issue), Extemporaneous Speaking, Informative Speaking (currently called Prepared Speaking), and Job Interview (currently called Job Seeking Skills).

Responses were so favorable that during the Second National Leadership Conference in New Jersey, demonstrations and exhibits of three more events were presented: HOSA Bowl, Best HOSA Chapter and Outstanding Chapter - the latter required members to prepare scrapbooks. None of these three events were adopted. However, another demonstration event of HOSA Bowl was held at the 1983 National Leadership Conference in Texas, then piloted at the 1984 National Leadership Conference in Florida and was made a regular event in 1985 at the Eighth National Leadership Conference in Tennessee. The Outstanding HOSA Chapter event also followed the now-in-place plan for new events and was a regular event in 1987 in Texas at the Tenth National Annual Leadership Conference.

It was not until the Fourth National Leadership Conference in New Mexico in 1981 and in Illinois in 1982 that competitive events demonstration and pilot events began in earnest in more specialized health related areas and in very specific health skills areas. This resulted from the increased program diversity of HOSA members.

Therefore, by the Sixth National Leadership Conference in Texas in 1983, four (4) categories of events, each with several events, were well established and had become an expected part of the Annual National Leadership Conference.

Currently there are seven categories, which include middle school, secondary, postsecondary/collegiate:

- National Geographic Learning Academic Testing Center
- Health Science Events
- Health Professions Events
- Emergency Preparedness Events
- Leadership Events
- Teamwork Events
- Recognition Events

New events continue to be suggested by states. Sponsoring states assume responsibility for the Demonstration each proposed event. All events are coordinated by the Competitive Events Program of Work and Headquarters Staff, with a Lieutenant in charge of each event. The first Competitive Events Handbook Section B was published in 1983.

HEALTH SCIENCE OR BIOMEDICAL SCIENCE PROGRAMS: MOVING FORWARD

HOSA is the only national student organization that exclusively serves secondary and post-secondary/collegiate students in pursuit of a career in the health professions. In June 2004, HOSA had a unique opportunity to expand its mission and membership in response to the critical shortages facing the health care industry. Motions were presented to the Delegate Assembly at the HOSA National Leadership Conference to expand the national organization to include all students who are interested, planning to pursue, or pursuing a career in the health professions.

In June 2004, members of the delegate assembly at the HOSA National Leadership Conference formalized HOSA's commitment to assuming a more aggressive leadership role by implementing solutions to resolve the challenges and issues facing the health care industry by making the following changes:

- References to Health Occupations Education were changed to Health Science or Biomedical Science Education.
- The term "vocational" was changed to: "career and technical education."
- **HOSA-FUTURE HEALTH PROFESSIONALS** became the official name of the organization in 2011.

HOSA BYLAWS UPDATES

Section 1. Membership Composition.

- a. HOSA is a national organization of, by and for students who (1) are or were enrolled in secondary, postsecondary/collegiate Health Science or Biomedical Science classes and/or (2) are interested, planning to pursue, or pursuing a career in the health professions.
- b. Members shall be students who are or have been enrolled in Health Science or Biomedical Science classes, and/or are interested, planning to pursue, or pursuing a career in the health professions, and persons associated with, participating in, or supporting Health Science or Biomedical Science in a professional capacity.

Section 3. The Secondary Division shall be composed of secondary students who are or have been enrolled in a Health Science or Biomedical Science or an organized health career awareness program or are interested, planning to pursue, or pursuing a career in the health professions.

Section 4. The Postsecondary/Collegiate Division shall be composed of students who are not enrolled in high school, have received a high school diploma and/or are pursuing GED and are enrolled in a health care related field at the undergraduate level or are interested or planning to pursue a career in the health professions.

By expanding the membership base and adopting terminology consistent with the current educational environment, HOSA accepted the unique opportunity to become the pipeline for future health professionals. In serving as the “pipeline,” HOSA would commit itself to lead a national initiative to inform, recruit, attract, engage, and retain qualified students as future health professionals.

CHAIRMEN

HOSA, INC. BOARD OF DIRECTORS

YEAR	CHAIRMAN	STATE
1976-77	Linda Walston	North Carolina
1977-78	Linda Walston	North Carolina
1978-79	Lois Graham	New Jersey
1979-80	Mary Randall	Oklahoma
1980-81	Lorraine Summers	Illinois
1981-82	James Keeton	Texas
1982-83	Barbara James	South Carolina
1983-84	Dr. Ruth-Ellen Ostler	New York
1984-85	Dr. Norma Walters	Alabama
1985-86	Christyne Thiele	Texas
1986-87	Wanda Wolf	Oklahoma
1987-88	Rosemarie Dunkelberger	Pennsylvania
1988-89	Ruth Killough	Oklahoma
1989-90	Dr. Gerald Holman	Texas
1990-91	Laurene McLemore	Tennessee
1991-92	Dr. Joyce Brandt	Iowa
1992-93	Martha Koblisch	New Jersey
1993-94	Carolyn Lee	California
1994-95	Mike Garcia	Texas
1995-96	Carla Maloy	Oklahoma
1997	Kim Smith	North Carolina
1998	Paul Booden	Michigan
1999	Patricia Eakin	Virginia
2000	Karen Batchelor	Texas
2001	Cheryl Keever	North Carolina
2002	Nancy Allen	South Carolina
2003	Belinda Mahone	Texas
2004	Regina St. George	Georgia
2005	Teresa Williamson	Tennessee
2006	Sandra Parker	Mississippi
2007	Becky Davis	West Virginia
2008	Kristen Davidson	Utah
2009	Mark Burley	Michigan
2010	Shelia Carlton	Tennessee
2011	Tonia Moore-Davis	Tennessee
2012	Lowell Doringo	Florida
2013	Denise Abbott	Utah
2014	Jane Shovlin	Arizona
2015	Lara Skaggs Morris	Oklahoma
2016	Lloyd DeVault	Florida
2017	Brock Rops	South Dakota
2018	Dr. Peg Enslin	Delaware
2019	Janet Villarreal	Texas
2020	Jason Huff	Ohio
2021	Dana Stringer	Alabama
2022	Jim Scott	Ohio
2023	Marcus Henderson	Pennsylvania
2024	Cindy Beck	California
2025	David Kelly, MD	California
2026	Frank Berdos, DMD	Florida

HOSA PRESIDENTS

YEAR	PRESIDENT	STATE
1976-77	Lynne McGee	North Carolina
1977-78	Lynne McGee	North Carolina
1978-79	Beverly Ann Camel	New Jersey
1979-80	Michael Harris	Texas
1980-81	Emily Woodward	Indiana
1981-82	Donald Cork	Texas
1982-83	Kelly McLoud	Oklahoma
1983-84	James Tomlin	Oklahoma
1984-85	Mark Edmonds	Tennessee
1985-86	Vicki Godbold	North Carolina
1986-87	Ufuk Tukel	North Carolina
1987-88	Melissa Monarch	Kentucky
1988-89	Debbie Eggert	Michigan
1989-90	Heidijo DeManche	Colorado
1990-91	Kristin Considine	Tennessee
1991-92	Missy Greeley	Tennessee
1992-93	Tonya Kymes	Oklahoma
1993-94	Franklin Ruff	Michigan
1994-95	Mackenzie Jackson	Alabama
1995-96	Gwynne Jurries	Texas
1996-97	Kevin Clark	Florida
1997-98	Mitch Shores	North Carolina
1998-99	Lowell Doringo	Texas
1999-00	Tobi Blanchard	Utah
2000-01	Rebecca Armen	North Carolina
2001-02	Rebecca Armen	North Carolina
2002-03	Joel Arvizo	Utah
2003-04	Adam Prim	North Carolina
2004-05	Lauren Sheldon	North Carolina
2005-06	Reginald Coleman	Indiana
2006-07	Sierra Jenkins	Tennessee
2007-08	Heather Coggins	South Carolina
2008-09	Luis Baez	Texas
2009-10	Michael Brode	South Carolina
2010-11	Claire Lucas	North Carolina
2011-12	Sean Sheffer	Nevada
2012-13	David Kelly	Oklahoma
2013-14	Antonio Hernandez	California
2014-15	Hugo Quezada	Texas
2015-16	Amit Sandhu	California
2016-17	Elizabeth Carnesi	Arizona
2017-18	Priya Rathakrishnan	Georgia
2018-19	Sarah Fleischman	Florida
2019-20	Vivian Do	California
2020-21	Jake Kelley	Tennessee
2021-22	Sricharan Pusala	Florida
2022-23	Kartik Tyagi	North Carolina
2023-24	Anna Feng	North Carolina
2024-25	Nick Ballard	North Carolina
2025-26	Ria Mohan	Virginia

HOSA National and International Leadership Conferences

NUMBER	YEAR	CITY	STATE
Constitutional Convention	1976	Arlington	Texas
1 st	1978	Oklahoma City	Oklahoma
2 nd	1979	Cherry Hill	New Jersey
3 rd	1980	Asheville	North Carolina
4 th	1981	Albuquerque	New Mexico
5 th	1982	Chicago	Illinois
6 th	1983	San Antonio	Texas
7 th	1984	Orlando	Florida
8 th	1985	Nashville	Tennessee
9 th	1986	Philadelphia	Pennsylvania
10 th	1987	Dallas	Texas
11 th	1988	Atlanta	Georgia
12 th	1989	Salt Lake City	Utah
13 th	1990	Orlando	Florida
14 th	1991	Washington	D.C.
15 th	1992	Anaheim	California
16 th	1993	Nashville	Tennessee
17 th	1994	Nashville	Tennessee
18 th	1995	Louisville	Kentucky
19 th	1996	Chicago	Illinois
20 th	1997	Anaheim	California
21 st	1998	Orlando	Florida
22 nd	1999	Nashville	Tennessee
23 rd	2000	Cleveland	Ohio
24 th	2001	Atlanta	Georgia
25 th	2002	Anaheim	California
26 th	2003	Atlanta	Georgia
27 th	2004	Orlando	Florida
28 th	2005	Nashville	Tennessee
29 th	2006	Anaheim	California
30 th	2007	Orlando	Florida
31 st	2008	Dallas	Texas
32 nd	2009	Nashville	Tennessee
33 rd	2010	Orlando	Florida
34 th	2011	Anaheim	California
35 th	2012	Orlando	Florida
36 th	2013	Nashville	Tennessee
37 th	2014	Orlando	Florida
38 th	2015	Anaheim	California
39 th	2016	Nashville	Tennessee
40 th	2017	Orlando	Florida
41 st	2018	Dallas	Texas
42 nd	2019	Orlando	Florida
43 rd	2020	Virtual	Texas
44 th	2021	Orlando	Florida
45 th	2022	Nashville	Tennessee
46 th	2023	Dallas	Texas
47 th	2024	Houston	Texas
48 th	2025	Nashville	Tennessee
49 th	2026	Indianapolis	Indiana

POLICY OF THE UNITED STATES DEPARTMENT OF EDUCATION

(Archived)

The United States Department of Education maintains a close relationship with eleven career & technical student organizations and welcomes their cooperation and support in strengthening programs of career & technical education. Recognizing that the past performance and future potential of these ten organizations are compatible with the overall purposes and objectives of education today, the United States Department of Education strongly endorses their objectives and seeks to involve their thinking in the improvement of career & technical education.

In view of this, these policies represent the position of the United States Department of Education:

1. The United States Department of Education recognizes the educational programs and philosophies embraced by the following career & technical student organizations as being an integral part of career & technical education instructional programs:
Business Professionals of America
DECA
Future Business Leaders of America
National FFA Organization
Family, Career & Community Leaders of America
HOSA-Future Health Professionals
National Postsecondary Agriculture Student Organization
National Young Farmer Education Association
Technology Student Association
SkillsUSA
2. The United States Department of Education recognizes the concept of total student development as being necessary for all career & technical education students to assume successful roles in society and to enter the labor market.
3. The United States Department of Education will facilitate technical and supportive services to assist career & technical student organizations through State agencies in their efforts to improve the quality and relevance of instruction, develop student leadership, enhance citizenship responsibilities, overcome sex, and race discrimination and stereotyping, and serve students of special populations, especially with respect to efforts to increase minority participation in these organizations.
4. The United States Department of Education recognizes the responsibility for career & technical instructional programs and related activities, including career & technical student organizations, rests with the State and local education agencies.
5. The United States Department of Education approves of Federal and State grant funds for career & technical education to be used by States to give leadership and support to these career & technical student organizations and activities directly related to established career & technical education instructional programs at all levels under provisions of approved State plans for career & technical education.

Efforts on the part of State and local education agencies to recognize and encourage the growth and development of these career & technical student organizations are highly important and deserve the support of all leaders in American Education.

Troy R. Justesen
Asst. Secretary Adult and Vocational Education U.S.
Dept. of Education
July 2008

HOSA AFFILIATED GROUPS

ACTE Association for Career and Technical Education. There are many divisions within the ACTE organization including one specifically for Health Science Technology Education. The Vice President of the HSE Division serves as an ex-officio member of the HOSA, Inc. Board of Directors.

Association for Career and Technical Education
1410 King Street
Alexandria, VA 22314 www.acteonline.org

COHOT Council of Health Occupations Teachers also has an ex-officio member on the HOSA, Inc. Board of Directors. Information on who to contact to join this organization can be obtained from the HSE Division of ACTE.

NCHSE The National Consortium for Health Science and Technology Education is a national partnership of individuals and organizations with a vested interest in health science and technology education. Organized in 1991, its purpose is to stimulate creative and innovative leadership for ensuring a well-prepared health care workforce.

NASSP The National Association of Secondary School Principals is composed of most of high school principals in the country. NASSP has endorsed HOSA's Competitive Event Program as well as the International Leadership Conference.

NCC-CTSO The National Coordinating Council for Career & Technical Student Organizations meets in Washington, D.C. and is composed of representatives from each of the eleven vocational student organizations, the USDE, ACTE, the State Directors of Vocational Education Association, and NACVE. The recognized career and technical student organizations are:

- Business Professionals of America (BPA)
- DECA
- Future Business Leaders of America - Phi Beta Lambda (FBLA-PBL)
- National FFA Organization (FFA)
- Family, Career & Community Leaders of America (FCCLA)
- HOSA-Future Health Professionals (HOSA)
- National Postsecondary Agriculture Student Organization (PAS)
- National Young Farmer Educational Association (NYFEA)
- SkillsUSA
- Technology Student Association (TSA)

NACVE The National Advisory Council on Vocational Education was created in The Federal Vocational Act. Members are appointed by the President of the United States. Each state has a SACVE (State Advisory Council on Vocational Education.)

USDE The United States Department of Education has recognized HOSA via a Policy Statement for Career & Technical Student Organizations. An archived copy can be found on page 45 of the *HOSA Handbook, Section A*.